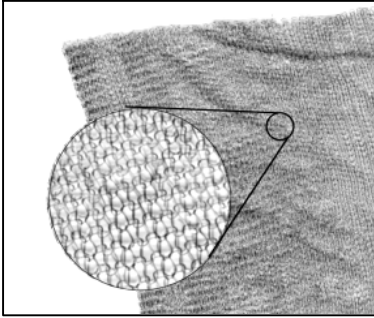


STAINLESS STEEL MESH SHIELDING FABRIC

Tough As Nails, Soft To Touch



Pure 100% surgical stainless Steel (AISI316L), .004 inch diameter, knitted into a shielding fabric that's as strong as steel! Tight knit pattern yields good shielding. 26 dB at 800 MHz, 15 dB at 1900 MHz. Permits good air flow and light

transmission too. Resists corrosion, and it's fully washable. Edges are hard to fray, even when cut. Trims easily with scissors and can be sewn. Use it for grounding, shielding, and conductive surfaces. Easy to ground. 190 gr/m² 40 inch wide.

SS Mesh Shielding Fabric (Cat. #272)

Washing instructions:

Hand wash, mild soap, warm water. NO BLEACH.
Rinse well. Hang dry.